

Creative Workplace Design



**THE
OTHER
OFFICE**
THREE

FRAME



Yoshihiro Kotani

U125

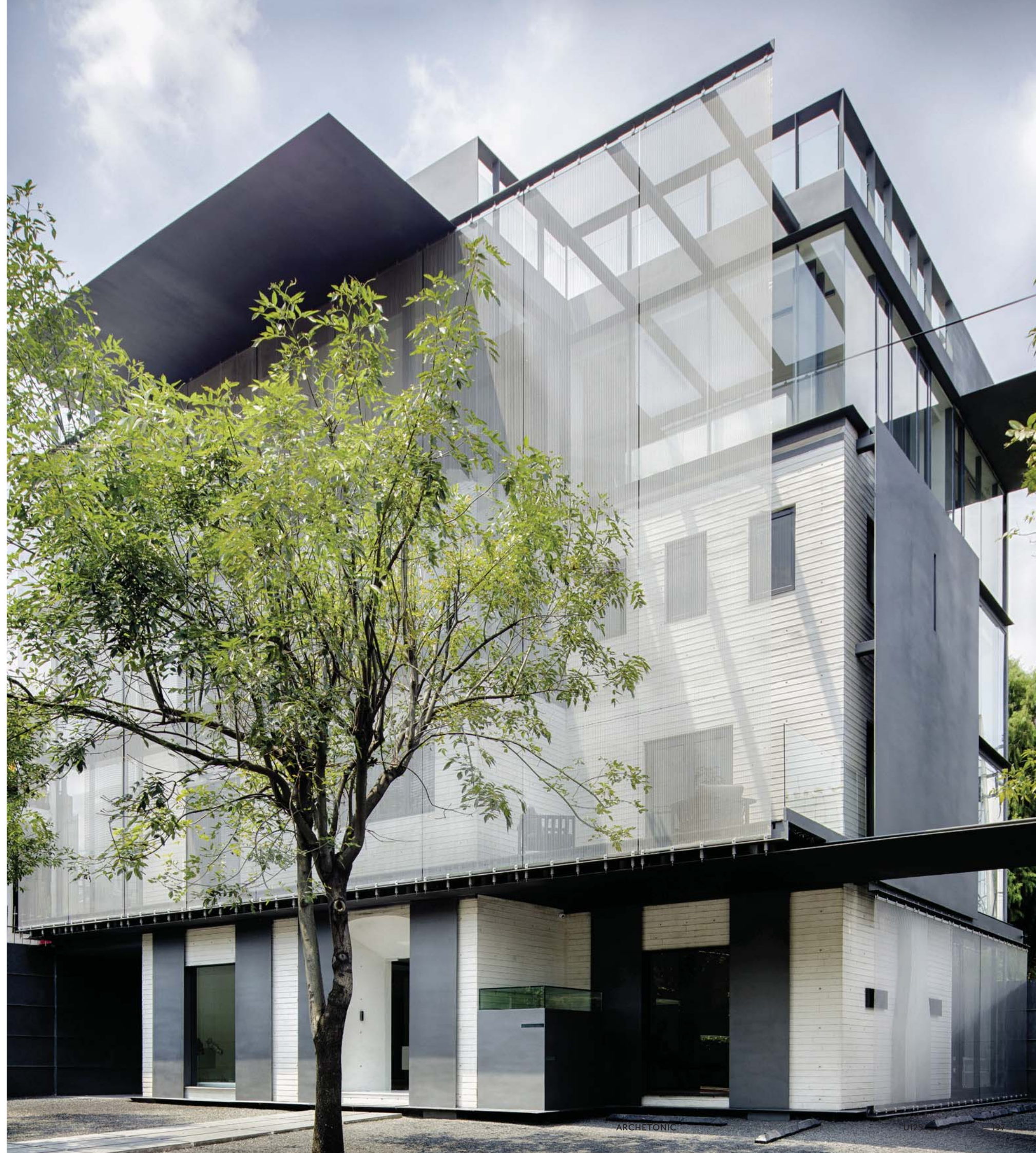
A strategic restoration by ARCHETONIC recycles and transforms a former residential building

MEXICO CITY – To the west of Mexico's capital city, the neighbourhood of Lomas de Chapultepec has recently become an up-and-coming area for the finance industry, thus driving up the price of real estate. Given the budding climate, existing properties are more and more often being considered for recycling as architects look to use the existing infrastructure to provide desirable locations for investors. Architecture practice Archetonic saw this opportunity and set out to redesign a derelict 1950s residential property, which they named U125 (after the street and building number) into a pleasant and habitable location for the firm's own design studio.

Careful decisions were made throughout the design process based on the technical and aesthetic capabilities

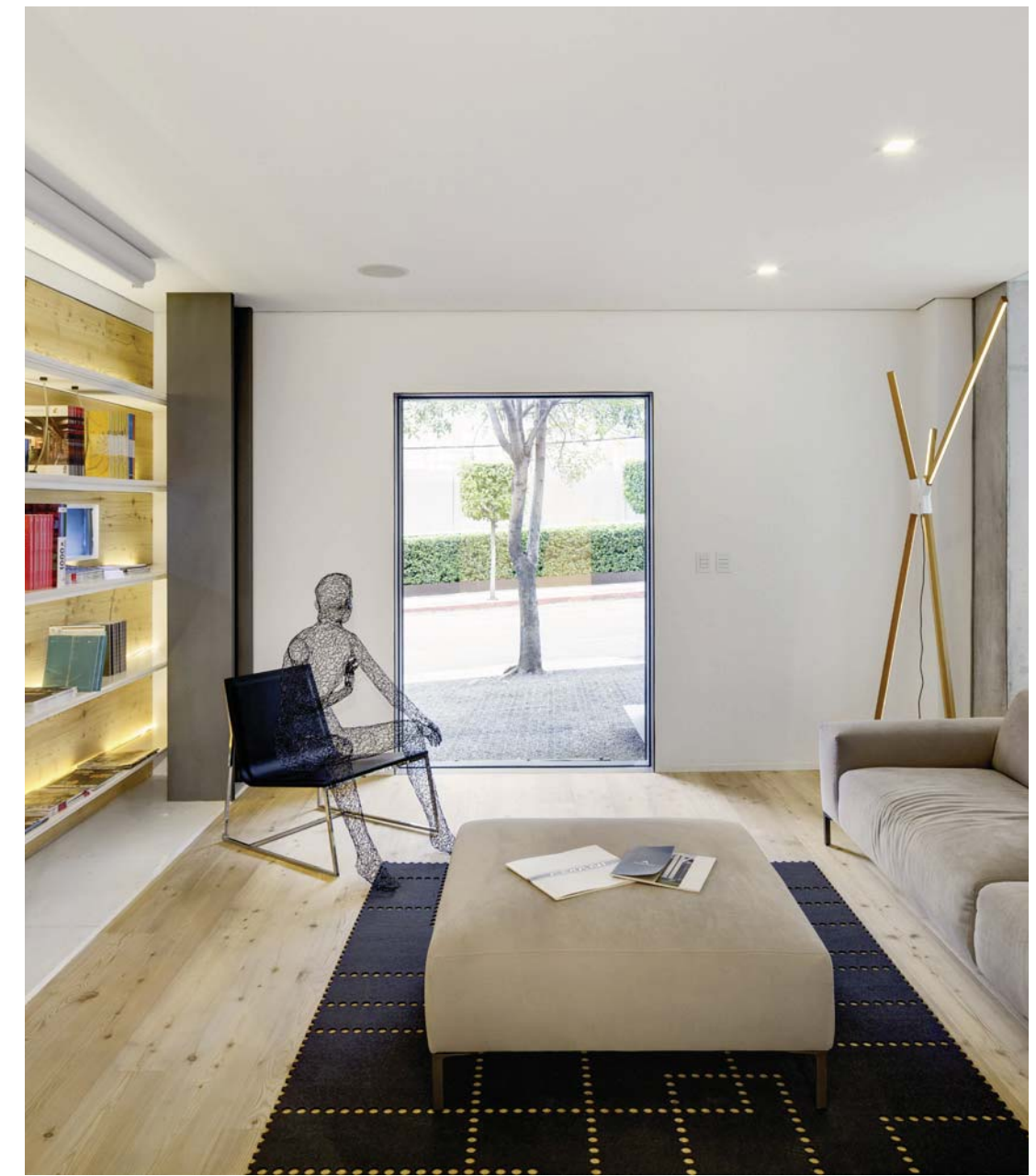
of the existing structure and how this might play into the building's future use. The remodelling of the interior created 604 m² of office space set over four levels to provide accommodation for 50 employees, including 28 architects and 21 specialists in accounting, finance and administration.

The project allowed both the practice and the architectural fabric of the building to grow together as they became accustomed to one another. By moulding the contemporary intervention in accordance with the original proportions, volumes and details of the building, Archetonic created a successful connection between past and future, as well as a balanced, functional atmosphere.





3



4

The design builds on the aesthetic capabilities of the existing structure

- 1 An angular, metal-plate staircase is painted white and cantilevers from the wall.
- 2 'The metal-plate roofs refer to the proportions of the house below. A metal mesh, tensioned between these roofs, gives the building its discrete, clean and elegant look,' the architects say.
- 3 The existing proportions of volumes, as well as openings and original details, were retained as much as possible in Archetonic's redesign, providing the interior with a more refined character and historical background.
- 4 While some areas have been turned into traditional office environments, some still appear as though the space has been laid out for living in.

The ground-level reception area is designed to welcome guests into a contemporary, but homely setting.

